

RELUCTANT

- Fearful
- Requires an ask
- Unimaginative

INTENTIONAL

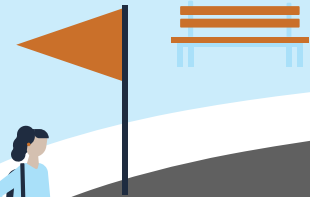
- Thoughtful
- Joyful
- Invested

COURAGEOUS

- Reckless
- Kingdom focused
- Motivated
- Expectant

CASUAL

- Sporadic
- Detached
- Passive



CONSUMER

- Self focused
- Impulsive
- Idle

GIVING GUIDE

We created the Giving Guide as a diagnostic tool. First, identify your current position on the journey of generosity. Next, pray and ask God where he would like you to be one year from now. Two years? Ten years? Finally, trust God with the answer and take a step of obedience to move forward.

Giving increases our joy and draws us closer to God, breaking the power of money and consumption over us.

GIVING GUIDE REFLECTIONS

Revisit the Giving Guide. Identify your current place on the giving road and determine concrete steps to move courageously.

If I am a consumer

SELF FOCUSED, IMPULSIVE, OR IDLE

- Who do I know that is generous? Get coffee with them to discuss their giving motivation and practices.
- In 2021, 636 people made first-time gifts to Grace Church. Join that group and see what happens.

If I am a casual giver

SPORADIC, DETACHED, PASSIVE

- Why do I treat my financial gifts differently than my other monthly expenses?
- In 2021, 625 people set up recurring gifts through our new online giving platform at my.gracechurchsc.org. We encourage you to do the same. Some benefits of online giving include:
 - Helps guard against forgetfulness
 - Planning and budgeting is easier for the church
 - Lessens the church's administrative work
 - It is safe and convenient

If I am a reluctant giver

FEARFUL, REQUIRES AN ASK, UNIMAGINATIVE

- What fears keep me from giving consistently?
- Revisit your budget. Prioritize your giving in the same way you would your other monthly expenses. Give it a line item and follow through.

If I am an intentional giver

THOUGHTFUL, JOYFUL, INVESTED

- Do I believe that consumption leads to happiness? What kind of house, cars, toys, vacations, and savings accounts will foster contentment? The answers to these questions are unique to you. What if you placed a cap on spending and saving? What if you decided that every additional dollar above that “financial finish line” goes towards the kingdom and courageous giving? What could that look like for your family?
- Consider setting a lifetime generosity goal (a specific number) for your family's kingdom giving over the course of your life.

If I am a courageous giver

RECKLESS, KINGDOM FOCUSED, MOTIVATED, EXPECTANT

- Find context to share your story to inspire the next generation of courageous givers.
- Complete estate planning that accurately reflects kingdom priorities.

If you need help with the financial basics and the “Give, Save, Live” model, please consider joining a Money Matters class.



**LEARN MORE AND VIEW
THE CALENDAR HERE.**

If you would like to discuss how to become a more kingdom-focused giver, email our generosity team at generosity@gracechurchsc.org.